



NATIONAL  
COMPETITIVENESS  
COUNCIL | PHILIPPINES



**Cities & Municipalities Competitiveness Index**

# WORK PROGRAM

- **Benchmark** against key global competitiveness indices
- **Map** each indicator to the agency responsible
- **Focus** on lowest-ranking indicators
- **Track** city competitiveness and key indicators
- **Working Groups** concentrate on specific projects
- **Link** work to Philippine Development Plan, National Budget, Legislative Executive Development Advisory Council, Cabinet Agenda

# GLOBAL COMPETITIVENESS REPORT CARD

REPORT	2010/2011	2015/2016	GOAL (Top 3rd)	CHANGE 4 or 5 yrs
1. Doing Business Report (IFC)*	148/183	103/189	63	↑ 45
2. Economic Freedom Index (HF)*	115/179	70/178	59	↑ 45
3. Corruption Perceptions Index (TI)	134/178	95/175	58	↑ 39
4. Global Competitiveness Index (WEF)	85/139	47/140	47	↑ 38
5. Global Enabling Trade Index (WEF)	92/125	64/138	46	↑ 28
6. Travel and Tourism Report (WEF)	94/139	74/141	46	↑ 20
7. WIPO- Global Innovation Index (WIPO)*	91/125	74/128	47	↑ 17
8. Global Information Technology Report (WEF)*	86/138	77/139	46	↑ 9
9. Fragile States Index (FFP) * ' **	50/177	54/178	118	↑ 4
10. Global Gender Gap Report (WEF)	9/142	7/145	47	↑ 1
11. World Competitiveness Report (IMD)*	41/59	42/60	20	↓ 1
12. Logistics Performance Index (WB)*	44/155	57/160	53	↓ 13

\*with 2016 Results, \*\*reverse ranking (1 as worst)

REACHED THE TOP THIRD

LATEST PERFORMANCE

# GLOBAL COMPETITIVENESS REPORT CARD

REPORT	2016	2015	2014	2013	2012	2011	2010	CHANGE 4/5 YEARS	ASEAN RANK	RELEASE DATE	SOURCE	TOP 1/3
1. Doing Business Report	-	103/189 *	95/189	108/189	138/185	136/183	148/183	↑ 45	6 of 10	Oct-16	International Finance Corporation	63
2. Economic Freedom Index	70/178	76/178	89/178	97/177	107/179	115/179	-	↑ 45	5 of 9	Jan-17	Heritage Foundation	59
3. Corruption Perceptions Index	-	95/168	85/175	94/177	105/176	129/183	134/178	↑ 39	3 of 9	Dec-16	Transparency International	58
4. Global Competitiveness Report	-	47/140	52/144	59/148	65/144	75/142	85/139	↑ 38	5 OF 9	Sep-16	World Economic Forum	47
5. Global Enabling Trade Index	-	n/a	64/138	n/a	72/132	n/a	*92/125	↑ 28	6 of 10	Mar-16	World Economic Forum	46
6. Travel and Tourism Report	n/a	74/141	n/a	82/140	n/a	94/139	n/a	↑ 20	5 of 7	Mar-17	World Economic Forum	46
7. Global Innovation Index	74/128	83/141	100/143	90/142	95/141	91/125	-	↑ 17	5 of 8	Jul-17	World Intellectual Property Organization	47
8. Global Information Technology Report	77/139	76/143	78/148	86/144	86/142	86/138	-	↑ 9	5 of 9	Apr 17	World Economic Forum	48
9. Fragile States Index	54/178	48/178	52/178	59/178	56/177	50/177	-	↑ 4	8 of 10	Jun-17	Fund for Peace	118
10. Global Gender Gap Report	-	7/145	9/142	5/136	8/135	8/135	9/142	↑ 1	1 of 9	Oct-16	World Economic Forum	47
11. World Competitiveness Yearbook	42/60	41/60	42/60	38/60	43/59	41/59	-	↓ 1	4 of 5	May-17	International Institute for Management Development	20
12. Logistics Performance Index	57/160	n/a	57/160	n/a	52/155	n/a	44/155	↓ 13	6 of 9	Mar-17	World Bank	53

## HOW TO READ THE REPORT CARD

The **Change** column shows the movement in the ranking over the past 5 years.

The **ASEAN Rank** column shows the position of the Philippines relative to other ASEAN economies for the most recent year available.

The **IFC Ease of Doing Business Report** is named one year in advance of the actual release date (The Doing Business Report 2016 was released in October 2015)..

The **Fragile States Index** (formerly known as the Failed States Index) is reverse-ranked with the 178th nation considered as very sustainable.

Reached the **Top 3<sup>rd</sup>** of World Rankings

**Latest Performance**

# TOP 4 BIGGEST GAINS



**+45**

**No. 103**  
from No.148


**DOING BUSINESS  
REPORT**



**+45**

**No. 70**  
from No. 115  
*2016 results*


**ECONOMIC  
FREEDOM INDEX**



**+39**

**No. 95**  
from No. 134

**CORRUPTION  
PERCEPTION INDEX**



**+38**

**No. 47**  
from No. 85

**GLOBAL  
COMPETITIVENESS  
REPORT**  
**WORLD  
ECONOMIC  
FORUM**

# LOCAL DATA FINDINGS

- Difficult to gather data at city and municipality level
- Sustainability of data collection affected by funding
- Time lag in national data surveys



NATIONAL  
COMPETITIVENESS  
COUNCIL | PHILIPPINES

# Data Collection



Cities & Municipalities Competitiveness Index

# START



## NCC sends CMCI survey forms to RCCs

February



# 1





# RCCs distribute CMCI survey forms to LGUs

February



# 2



# LGUs fill out CMCI survey forms

Feb to April



3



RCCs collect survey forms and validate LGU submissions

April to May



4

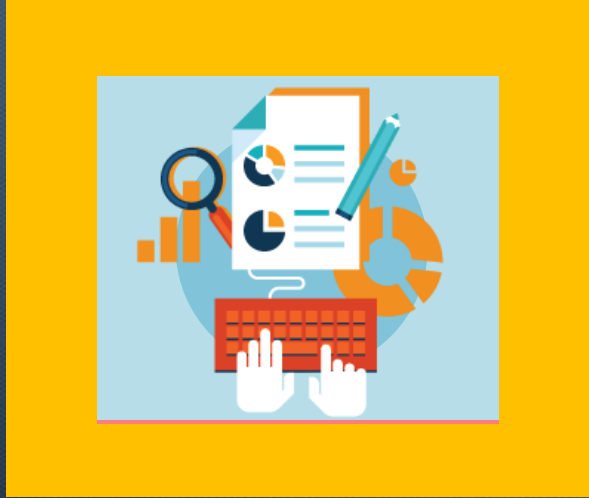


RCCs submit regional  
validated data to NCC

May to June



5



NCC processes regional data to come-up with national rankings

June



6



NCC presents results  
and awards best  
performing localities

END

July

7



NATIONAL  
COMPETITIVENESS  
COUNCIL | PHILIPPINES

# Frequently Asked Questions



# FREQUENTLY ASKED QUESTIONS

## What's in it for us?

- Help LGUs benchmark and position itself vis-à-vis other locations.
- Use CMCI as a Diagnostic Tool (Strengths and weaknesses)
- Identify priority areas for improvement (Lowest ranking indicators)
- Put LGUs in the “radar screen” of potential local and foreign investors.



# FREQUENTLY ASKED QUESTIONS

-Where do we access our data?

[www.competitive.org.ph/cmindex](http://www.competitive.org.ph/cmindex)

-

# FREQUENTLY ASKED QUESTIONS

-What happens if we do not submit data for a particular year?

LGU will still be ranked. NCC will use previous year's submissions.

Results to Lower Scores/Rankings.

# Last Data Update was 2015 (52 LGUs)

CITY / MUNICIPALITY	REGION	PROVINCE	LOCAL GOVERNMENT UNIT	YEAR OF ENTRY / PARTICIPATION	YEAR OF LAST UPDATE
City	Negros Island Region	Negros Occidental	Bago	2013	2015
City	Negros Island Region	Negros Occidental	Himamaylan	2013	2015
Municipality	Negros Island Region	Negros Occidental	Hinobaan	2013	2015
Municipality	REGION II (Cagayan Valley)	Isabela	Alicia (IA)	2013	2015
Municipality	REGION III (Central Luzon)	Zambales	Botolan	2013	2015
Municipality	REGION III (Central Luzon)	Zambales	San Marcelino	2013	2015
Municipality	REGION VI (Western Visayas)	Capiz	Dumarao	2013	2015
Municipality	REGION VI (Western Visayas)	Capiz	President Roxas (CZ)	2013	2015
Municipality	CAR - Cordillera Administrative Region	Benguet	Mankayan	2014	2015
Municipality	CAR - Cordillera Administrative Region	Kalinga	Pinukpuk	2014	2015
Municipality	Negros Island Region	Negros Occidental	Cauayan (NO)	2014	2015
Municipality	Negros Island Region	Negros Occidental	La Castellana	2014	2015
Municipality	REGION II (Cagayan Valley)	Isabela	Dinapigue	2014	2015
Municipality	REGION III (Central Luzon)	Zambales	Santa Cruz (ZA)	2014	2015
Municipality	REGION V (Bicol Region)	Sorsogon	Casiguran (SO)	2014	2015
<b>Municipality</b>	<b>REGION V (Bicol Region)</b>	<b>Camarines Sur</b>	<b>Goa</b>	<b>2014</b>	<b>2015</b>
Municipality	REGION V (Bicol Region)	Masbate	Mandaon	2014	2015
Municipality	REGION V (Bicol Region)	Sorsogon	Matnog	2014	2015
Municipality	REGION V (Bicol Region)	Masbate	Monreal	2014	2015
<b>Municipality</b>	<b>REGION V (Bicol Region)</b>	<b>Camarines Sur</b>	<b>Ragay</b>	<b>2014</b>	<b>2015</b>
City	REGION VI (Western Visayas)	Capiz	Roxas (CZ)	2014	2015
Municipality	CAR - Cordillera Administrative Region	Benguet	Kibungan	2015	2015
Municipality	Negros Island Region	Negros Occidental	Manapla	2015	2015
Municipality	Negros Island Region	Negros Occidental	Pulupandan	2015	2015

# Frequently Asked Questions

-What is the difference between Category Rankings and Overall Rankings?

	OVERALL		CATEGORY	
	Rank	Score	Rank	Score
Overall Total Score	2	55	3	54.755935
Economic Dynamism	3	16.6022546	4	16.66285011
Local Economy Size	3	1.5389	3	1.5933
Local Economy Growth	118	0.1571	32	0.7673

# Frequently Asked Questions

## -Overall Rankings

All Cities (134)

All Municipalities (1245)

-Used for Provincial  
Scoring and Ranking

-No Awards

## -Category Rankings

Highly Urbanized(134)

Component (1245)

1<sup>st</sup> to 2<sup>nd</sup> Class(490)

3<sup>rd</sup> to 6<sup>th</sup> Class (755)

-Used to make Apples to  
Apples Comparison

-With Awards

# Frequently Asked Questions

-Who does the validation?

Regional Academe / Regional PSA

National Competitiveness Council

Other NGAs (DOF-BLGF, PSA, Philhealth,  
etc.)

# Frequently Asked Questions

-How does NCC come up with the National Rankings?

- Overall Rankings

- Category Rankings

- Provincial Rankings



NATIONAL  
COMPETITIVENESS  
COUNCIL | PHILIPPINES

# SCORING

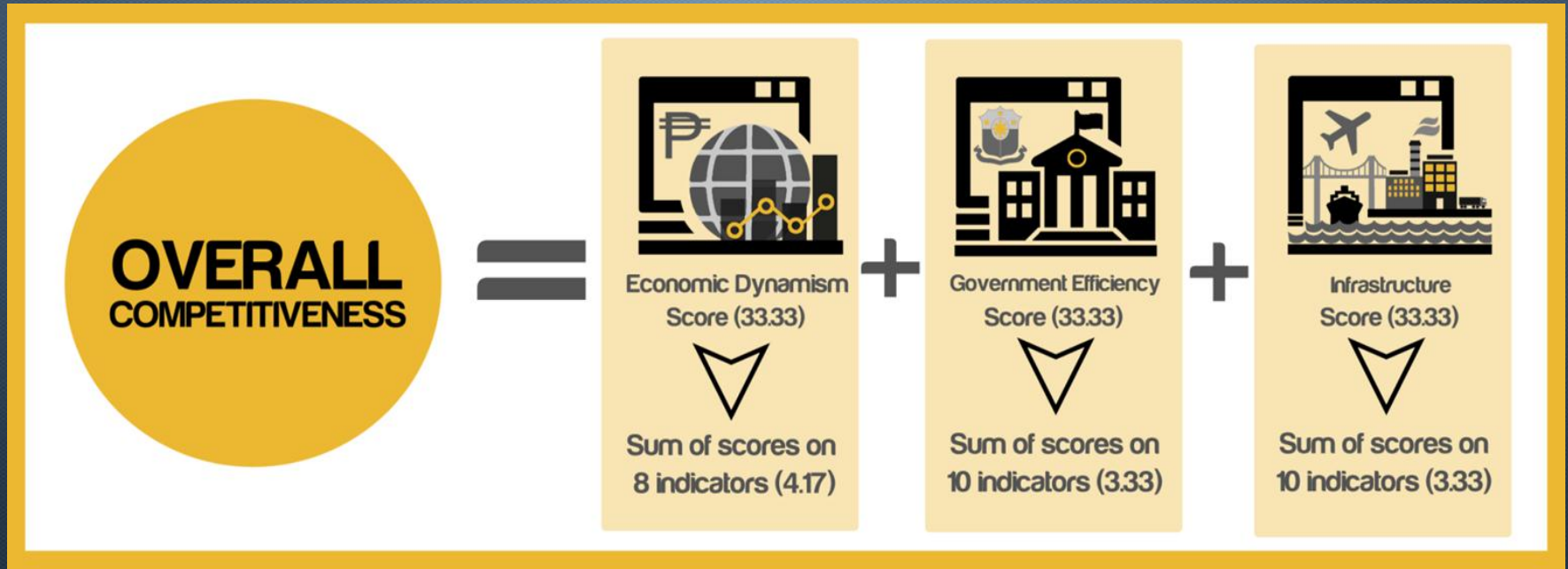
Actual NCC Score Sheets



Cities & Municipalities Competitiveness Index



# Scoring



# Scoring

- To standardize the computations, the standard formula for the human development index was adopted:

$$\frac{\text{Actual value}(x) - \text{Minimum Value } (x)}{\text{Maximum value } (x) - \text{Minimum value } (x)}$$

- The resulting value is then multiplied to the identified weight per indicator.

**NOTE:** Some data, such as those requiring a “yes” or “no” answer or growth rates, were subject to a special scoring system so they could be reflected in the rankings.

# CMCI Indicators

Economic Dynamism	Government Efficiency	Infrastructure
1. Size of the Local Economy (Registrations, Capital, Revenue, Permits)	1. Capacity of Health Services	1. Existing Road Network
2. Growth of the Local Economy	2. Capacity of Schools	2. Distance of Center to Major Ports
3. Capacity to Generate Employment	3. Security	3. Department of Tourism-Accredited Accommodations
4. Cost of Living	4. Business Registration Efficiency	4. Health Infrastructure
5. Cost of Doing Business	5. *Compliance to BPLS Standards	5. Education Infrastructure
6. Financial Deepening	6. Investment Promotions	6. Availability of Basic Utilities
7. Presence of Business and Professional Organizations	7. Compliance to National Directives for LGUs	7. Annual Investment in Infrastructure
8. Productivity	8. Ratio of LGU Collected Tax to LGU Revenue	8. Connection of ICT
	9. Most Competitive LGU Awards	9. No. of ATMs
	10. *Social Protection	10. No. of Public Transport Vehicles

\*new indicators

# Scoring (NCC Score Sheet)

Size of Local Economy: Total Annual Business Registrations (2013 Data)	215	Minimum Value		
	64,515	Maximum Value		
	1.0417	Sub-indicator Index Score		
City	DATA	Rank	Index Value	Sub Indicator Index Score
Quezon City (max value)	64,515	1	1.000	1.0417
Manila City	56,365	2	0.873	0.9096
Makati City	35,534	3	0.549	0.5722
Davao City	33,714	4	0.521	0.5427
Palayan City (min value)	215	124	-	-
Bais City (no data)	NDA	-	-	-

# Scoring (NCC Score Sheet)

Size of Local Economy: Total Capitalization of New Businesses (2013 Data)	₱53,535.00	Minimum Value		
	₱921,235,980,926.10	Maximum Value		
	1.0417	Sub-indicator Index Score		
City	DATA	Rank	Index Value	Sub Indicator Index Score
Mandaluyong City (max value)	₱921,235,980,926.10	1	1.000	1.0417
Makati City	₱16,627,208,144.00	2	0.018	0.0188
Cebu City	₱14,393,689,086.02	3	0.016	0.0162
Quezon City	₱8,153,846,918.73	4	0.009	0.0092
Antipolo City	₱7,033,777,285.00	5	0.008	0.0079
Sipalay City (min value)	₱53,535.00	115	-	-
Igacos City (no data)	NDA	-	-	-

# Scoring (NCC Score Sheet)

Size of Local Economy: Gross Sales (2013 Data)	₱200,000.00	Minimum Value		
	₱994,561,274,811.00	Maximum Value		
	1.0417	Sub-indicator Index Score		
City	DATA	Rank	Index Value	Sub Indicator Index Score
Makati City	₱994,561,274,811.00	1	1.000	1.0417
Cebu City	₱225,116,429,549.11	2	0.226	0.2351
Mandaluyong City	₱203,136,666,947.83	3	0.204	0.2120
Davao City	₱193,000,000,000.00	4	0.193	0.2014
Muntinlupa City	₱147,453,092,477.00	5	0.147	0.1536
Binan City	₱200,000.00	116	-	-
Manila City	NDA	-	-	-

# Scoring (NCC Score Sheet)

Size of Local Economy: Permits (2013 Data)	6	Minimum Value		
	10,687	Maximum Value		
	1.0417	Sub-indicator Index Score		
City	DATA	Rank	Index Value	Sub Indicator Index Score
Marikina City	10,687	1	1.000	1.0417
San Fernando City (LU)	8,634	2	0.808	0.8414
Navotas City	6,817	3	0.638	0.6642
Tanauan City	4,564	4	0.427	0.4445
Balanga City	3,124	5	0.292	0.3041
Bislig City	6	115	-	-
Quezon City	NDA	-	-	-

# Scoring (NCC Score Sheet)

Score: Size of Local Economy						
City	Registrations	Capital	Gross Sales	Permits	INDEX SCORE	RANK
Makati City	0.57217	0.01876	1.04167	0.15350	1.7861	1
Mandaluyong City	0.23318	1.04167	0.21202	0.03589	1.5228	2
Marikina City	0.24765	0.00089	0.05727	1.04167	1.3475	3
Quezon City	1.04167	0.00918	-	-	1.0508	4
Manila City	0.90964	-	-	0.12122	1.0309	5
San Fernando City (LU)	0.11476	0.00031	0.01066	0.84145	0.9672	6
Davao City	0.54269	0.00674	0.20139	0.07831	0.8291	7
Cebu City	0.51191	0.01623	0.23506	0.04203	0.8052	8
Navotas City	0.05766	0.00048	0.03474	0.66424	0.7571	9
Cagayan de Oro City	0.29560	0.00149	0.06966	0.18208	0.5488	10



# Scoring (NCC Score Sheet)

City	Size Score	Growth Score	Jobs Score	Cost of Living Score	Financial Institutions Score	Productivity Score	Business Groups Score	Cost of Doing Business Score	Economic Dynamism Total	RANK
Paranaque City	0.486673	1.345015	0.170489	4.038462	1.965932	4.166667	2.626812	2.927049	17.7271	1
Makati City	1.786144	1.329470	4.166667	4.038462	2.459016	0.352890	1.494565	1.585538	17.2128	2
Manila City	1.030860	0.830211	0.795580	4.038462	4.166667	-	4.166667	-	15.0284	3
Naga City (CS)	0.238959	1.296119	0.763814	3.269231	0.858094	0.186936	3.789251	3.611974	14.0144	4
General Santos City	0.252834	1.216520	1.102611	3.141026	0.943477	0.090988	3.381643	3.426312	13.5554	5
Mandaluyong City	1.523498	1.357431	0.393971	4.038462	1.434426	0.791455	0.951087	2.856594	13.3469	6
Valenzuela City	0.413707	2.048931	0.795277	4.038462	0.883709	0.210528	1.615338	2.995255	13.0012	7
Caloocan City	0.243603	1.243537	0.737986	4.038462	1.174010	0.123742	2.249396	3.033013	12.8437	8
Cagayan de Oro City	0.549738	1.429575	0.226974	2.884615	1.814378	0.818495	2.294686	2.709763	12.7282	9

# Scoring (NCC Score Sheet)

City	Province	Region	Economic Dynamism	RANK	Government Efficiency	RANK	Infrastructure	RANK	Overall	RANK
Makati City	-	National Capital Region	17.2128	2	20.9999	4	15.02951	4	53.2422	1
Cagayan de Oro City	Misamis Oriental	Region X - Northern Mindanao	12.7282	9	20.3909	5	16.24422	2	49.3634	2
Naga City (CS)	Camarines Sur	Region V - Bicol Region	14.0144	4	24.3652	1	10.69563	18	49.0752	3
Davao City	Davao del Sur	Region XI - Davao Region	12.4436	11	18.9829	13	16.29023	1	47.7168	4
Marikina City	-	National Capital Region	11.2186	19	18.8354	16	15.41140	3	45.4654	5
Iloilo City	Iloilo	Region VI - Western Visayas	9.9827	23	22.2940	2	12.72621	7	45.0029	6
Cebu City	Cebu	Region VII - Central Visayas	12.5864	10	16.2118	55	14.88829	5	43.6865	7



NATIONAL  
COMPETITIVENESS  
COUNCIL | PHILIPPINES

# PROVINCIAL RANKING

Qualification and Methodology



Cities & Municipalities Competitiveness Index

# Qualification of a Province

- There will be two qualifying measures for the provincial ranking:
  - **60%** of the Provincial Population and
  - **90%** of the LGUs in the Province shall be covered
- **Highly Urbanized Cities** shall now be **excluded** in the computation of **provincial scores**.

# Provincial Scoring

$$\sum_{i=1}^N w_i \text{ (LGU score) }_i, i = \text{all LGU scores in the province}$$

where:  $w = 0.5x + 0.5y$  ,

$x =$	$\frac{\text{LGU Population}}{\text{Total Provincial Population}}$
$y =$	$\frac{\text{LGU Income}}{\text{Total Provincial Income}}$

-For qualified provinces, the score is calculated as the **population** and **income weighted average** of the LGUs covered.

-Aggregate scores of LGUs covered.

-Scores are based on **overall scores** of participating **Cities (except HUCs)** and **Municipalities** in the **province** and not the category scores.

# Sample Provincial Scoring

LGU	LGU Population	% to Total Population	Population weight (0.5)	LGU Revenue	% to Total Revenue	Revenue weight (0.5)	Total LGU Weight	LGU Overall Score	Provincial Score
LGU1	28,063	0.16	0.08	1,321,628	0.04	0.02	0.10	11.122440	1.1635
LGU2	19,393	0.11	0.06	1,506,319	0.05	0.03	0.08	27.020065	2.2259
LGU3	35,779	0.21	0.10	2,702,841	0.09	0.05	0.15	23.132299	3.4858
LGU4	20,669	0.12	0.06	2,008,968	0.07	0.03	0.09	16.122988	1.5263
LGU5	66,951	0.39	0.20	21,848,648	0.74	0.37	0.57	26.048935	14.7867
<b>Total</b>	<b>170,855</b>		<b>0.5</b>	<b>29,388,405</b>		<b>0.5</b>	<b>1.00</b>		<b>23.1883</b>

**PROVINCIAL SCORE**

(sum)



NATIONAL  
COMPETITIVENESS  
COUNCIL | PHILIPPINES

# CMCI 2016



**CMCI2016** ranked local governments  
on **5 different categories**



**Highly Urbanized Cities**

**Component Cities**

**1<sup>st</sup> to 2<sup>nd</sup> Class Municipalities**

**3<sup>rd</sup> to 6<sup>th</sup> Class Municipalities**

**PROVINCES**



**CMCI2016** also recognized

# **Most Improved Cities and Municipalities**

**→ Highly Urbanized Cities**

**→ Component Cities**

**→ 1<sup>st</sup> to 2<sup>nd</sup> Class Municipalities**

**→ 3<sup>rd</sup> to 6<sup>th</sup> Class Municipalities**



A total of **55 awards** were given to the best performing local governments

## Categories

- Provinces (3)
- Highly Urbanized Cities (12)
- Component Cities (12)
- 1<sup>st</sup> and 2 Class Cities (12)
- 3<sup>rd</sup> to 6<sup>th</sup> Class Municipalities (12)
- Most Improved Cities (2)
- Most Improved Municipalities (2)





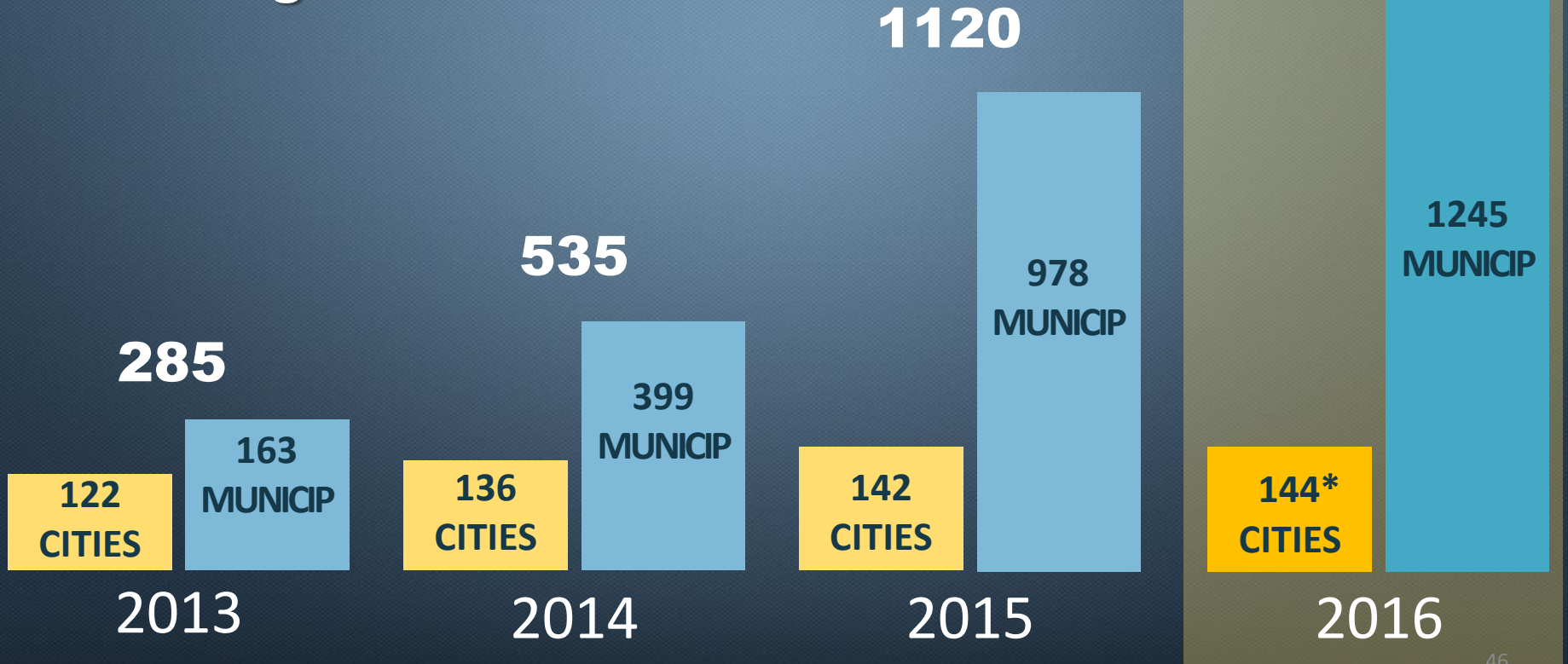
NATIONAL  
COMPETITIVENESS  
COUNCIL | PHILIPPINES

# Coverage



# CMCI2016

## Coverage



# A total of **1389** participating Local Governments

## **144 Cities** *(All Cities)*



**34**

Highly  
Urbanized Cities



**110**

Independent Component  
and Component Cities

## **1245 Municipalities**



**490**

1<sup>st</sup> to 2<sup>nd</sup> Class  
Municipalities  
(326 first class and  
164 second class)



**755**

3<sup>rd</sup> to 6<sup>th</sup> Class  
Municipalities  
(240 second class, 179 third class,  
323 fourth class, 183 fifth class  
and 9 Sixth class)

A total of **74 out of 81** provinces  
qualified for provincial ranking



# Remaining Provinces

- Abra, CAR
- Catanduanes, Region V
- Basilan, ARMM
- Lanao Del Sur, ARMM
- Maguindanao, ARMM
- Sulu, ARMM
- Tawi-tawi, ARMM



NATIONAL  
COMPETITIVENESS  
COUNCIL | PHILIPPINES

# 2016 RESULTS

## CAMARINES SUR



Cities & Municipalities Competitiveness Index



# Top 10 Provinces

Rank	Province	Region
1	Rizal	Region IVA- CALABARZON
2	Cavite	Region IVA- CALABARZON
3	South Cotabato	Region XII - SOCCSKSARGEN
4	Laguna	Region IVA- CALABARZON
5	North Cotabato	Region XII - SOCCSKSARGEN
6	Sultan Kudarat	Region XII - SOCCSKSARGEN
7	Bataan	Region III - Central Luzon
8	Aklan	Region VI - Western Visayas
9	Batangas	Region IVA- CALABARZON
10	La Union	Region I - Ilocos Region
18	Camarines Sur	Region V - Bicol Region

# 18

## Camarines Sur



### Region:

Region V - Bicol Region

### Population

1, 822, 371 (as of May 2010)

Source: [Philippine Statistics Authority](#)

### Governor

Gov. Miguel Luis R. Villafuerte

Local Government	Classification	Overall Score	Population	Population Weight (% to Total Population *50%)	Revenue	Revenue Weight (% to Total Revenue *50%)	Total Percentage to Score (Percentage Weight + Revenue Weight)	Provincial Score (CMI Score * Percentage to Score)
Naga (CS)	Independent Component City	36.9803	174,931	0.056	Php1,049,625,297.92	0.218	0.274	10.1314
Pili	First Class	28.4804	82,307	0.026	Php209,681,191.34	0.044	0.070	1.9913
Iriga	Component City	29.0188	105,919	0.034	Php99,195,675.32	0.021	0.055	1.5832
Bula	Second Class	27.4593	68,011	0.022	Php140,348,660.30	0.029	0.051	1.3988
Buhi	First Class	24.3818	73,809	0.024	Php149,001,464.43	0.031	0.055	1.3312
Tigaon	Third Class	27.0695	48,611	0.016	Php122,750,019.60	0.025	0.041	1.1117
Sipocot	First Class	22.0101	64,042	0.021	Php140,880,682.00	0.029	0.050	1.0957
Calabanga	First Class	17.4403	78,119	0.025	Php134,972,403.42	0.028	0.053	0.9255
Baao	Third Class	21.3982	54,971	0.018	Php114,191,396.90	0.024	0.041	0.8844
Libmanan	First Class	24.3197	100,002	0.032	Php8,157,236.07	0.002	0.034	0.8211
Nabua	First Class	22.1923	80,111	0.026	Php22,163,228.89	0.005	0.030	0.6722
San Fernando (CS)	Fourth Class	21.7225	33,281	0.011	Php75,065,830.31	0.016	0.026	0.5703
Tinambac	First Class	15.5730	62,435	0.020	Php11,283,875.35	0.002	0.022	0.3483
Pasacao	Third Class	19.5856	45,946	0.015	Php13,807,638.28	0.003	0.018	0.3447
San Jose (CS)	Fourth Class	22.7948	38,523	0.012	Php5,944,433.77	0.001	0.014	0.3097
Ocampo	Third Class	20.4125	43,523	0.014	Php2,634,604.15	0.001	0.015	0.2961
Cabusao	Fifth Class	17.6732	18,049	0.006	Php52,123,626.14	0.011	0.017	0.2935
Lagonoy	Second Class	17.5127	51,814	0.017	NDA	0.000	0.017	0.2910
Caramoan	Second Class	16.9917	44,945	0.014	NDA	0.000	0.014	0.2449
Sag	Fourth Class	21.9922	31,314	0.010	Php3,955,153.04	0.001	0.011	0.2389
Bombon	Fifth Class	15.8633	15,437	0.005	Php45,968,995.62	0.010	0.014	0.2299
Camaligan	Fifth Class	24.9366	22,254	0.007	Php2,921,192.83	0.001	0.008	0.1931
Goa	Second Class	9.9795	58,503	0.019	NDA	0.000	0.019	0.1872
Ragay	First Class	10.6053	54,934	0.018	NDA	0.000	0.018	0.1868
Balatan	Fourth Class	16.7959	28,699	0.009	Php4,157,338.50	0.001	0.010	0.1691
Bato (CS)	Third Class	10.2370	48,306	0.015	NDA	0.000	0.015	0.1586
Presentacion	Fourth Class	10.7579	20,023	0.006	NDA	0.000	0.006	0.0691
Gainza	Fifth Class	15.3208	10,345	0.003	NDA	0.000	0.003	0.0508

# Per Pillar Rankings

## Component Cities: Economic Dynamism

Rank	City	Province	Region
1	Naga (CS)	Camarines Sur	Region V - Bicol Region
2	Imus	Cavite	Region IVA- CALABARZON
3	Binan	Laguna	Region IVA- CALABARZON
4	San Fernando (PA)	Pampanga	Region III - Central Luzon
5	San Pedro	Laguna	Region IVA- CALABARZON
6	Antipolo	Rizal	Region IVA- CALABARZON
7	Lipa	Batangas	Region IVA- CALABARZON
8	Batangas	Batangas	Region IVA- CALABARZON
9	Cabuyao	Laguna	Region IVA- CALABARZON
10	Cotabato	Cotabato	Region XII - SOCCSKSARGEN

# Per Pillar Rankings

## Component Cities: Government Efficiency

Rank	City	Province	Region
1	Cotabato	Cotabato	Region XII - SOCCSKSARGEN
2	Naga (CS)	Camarines Sur	Region V - Bicol Region
3	Legazpi	Albay	Region V - Bicol Region
4	Kidapawan	North Cotabato	Region XII - SOCCSKSARGEN
5	Ilagan	Isabela	Region II - Cagayan Valley
6	Santiago (IA)	Isabela	Region II - Cagayan Valley
7	Koronadal	South Cotabato	Region XII - SOCCSKSARGEN
8	San Fernando (PA)	Pampanga	Region III - Central Luzon
9	Tacurong	Sultan Kudarat	Region XII - SOCCSKSARGEN
10	Ormoc	Leyte	Region VIII - Eastern Visayas

# Per Pillar Rankings

## Component Cities: Infrastructure

Rank	City	Province	Region
1	Naga (CS)	Camarines Sur	Region V - Bicol Region
2	Bacoor	Cavite	Region IVA- CALABARZON
3	Legazpi	Albay	Region V - Bicol Region
4	Tagum	Davao del Norte	Region XI - Davao Region
5	Calamba (LA)	Laguna	Region IVA- CALABARZON
6	San Fernando (PA)	Pampanga	Region III - Central Luzon
7	Antipolo	Rizal	Region IVA- CALABARZON
8	Dasmaringas	Cavite	Region IVA- CALABARZON
9	Ilagan	Isabela	Region II - Cagayan Valley
10	Santa Rosa (LA)	Laguna	Region IVA- CALABARZON

# Overall Rankings

## Component Cities:

Rank	City	Province	Region
1	Naga (CS)	Camarines Sur	Region V - Bicol Region
2	San Fernando (PA)	Pampanga	Region III - Central Luzon
3	Legazpi	Albay	Region V - Bicol Region
4	Bacoor	Cavite	Region IVA- CALABARZON
5	Cotabato	Cotabato	Region XII - SOCCSKSARGEN
6	Antipolo	Rizal	Region IVA- CALABARZON
7	Iligan	Isabela	Region II - Cagayan Valley
8	Imus	Cavite	Region IVA- CALABARZON
9	Tagum	Davao del Norte	Region XI - Davao Region
10	San Pedro	Laguna	Region IVA- CALABARZON

# Per Pillar Rankings

## 1<sup>st</sup> to 2<sup>nd</sup> Class Municipalities: Economic Dynamism

Rank	Municipality	Province	Region
1	General Trias	Cavite	Region IVA- CALABARZON
2	Cainta	Rizal	Region IVA- CALABARZON
3	Santa Maria (BU)	Bulacan	Region III - Central Luzon
4	Taytay (RL)	Rizal	Region IVA- CALABARZON
5	Malay	Aklan	Region VI - Western Visayas
6	Mexico	Pampanga	Region III - Central Luzon
7	Isulan	Sultan Kudarat	Region XII - SOCCSKSARGEN
8	Kalibo	Aklan	Region VI - Western Visayas
9	Bulan	Sorsogon	Region V - Bicol Region
10	Minglanilla	Cebu	Region VII - Central Visayas

# Per Pillar Rankings

## 3<sup>rd</sup> to 6<sup>th</sup> Class Municipalities: Infrastructure

Rank	Municipality	Province	Region
1	Infanta (QN)	Quezon	Region IVA- CALABARZON
2	Pagsanjan	Laguna	Region IVA- CALABARZON
3	Baler	Aurora	Region III - Central Luzon
4	Cabatuan (IA)	Isabela	Region II - Cagayan Valley
5	San Simon	Pampanga	Region III - Central Luzon
6	Taal	Batangas	Region IVA- CALABARZON
7	Cordova	Cebu	Region VII - Central Visayas
8	Tayug	Pangasinan	Region I - Ilocos Region
9	Compostela (CU)	Cebu	Region VII - Central Visayas
10	Tigaon	Camarines Sur	Region V - Bicol Region



# RANKINGS: COMPONENT CITIES

OVERALL RANK	LOCAL GOVERNMENT UNIT	CATEGORY	ECONOMIC DYNAMISM	GOVERNMENT EFFICIENCY	INFRASTRUCTURE
1	Naga (CS)	Independent Component City	1	2	1
45	Iriga	Component City	47	69	24

# RANKINGS:

## 1ST TO 2ND CLASS MUNICIPALITIES

OVERALL RANK	LOCAL GOVERNMENT UNIT	CATEGORY	ECONOMIC DYNAMISM	GOVERNMENT EFFICIENCY	INFRASTRUCTURE
70	Pili	First Class	43	197	42
98	Bula	Second Class	148	141	88
214	Libmanan	First Class	134	316	85
216	Buhi	First Class	150	218	320
303	Nabua	First Class	146	309	361
307	Sipocot	First Class	232	386	103
411	Lagonoy	Second Class	426	424	305
418	Calabanga	First Class	405	410	387
423	Caramoan	Second Class	411	450	235
441	Tinambac	First Class	428	452	345
469	Ragay	First Class	419	476	467
474	Goa	Second Class	479	470	452

# RANKINGS:

## 3RD TO 6TH CLASS MUNICIPALITIES

OVERALL RANK	LOCAL GOVERNMENT UNIT	CATEGORY	ECONOMIC DYNAMISM	GOVERNMENT EFFICIENCY	INFRASTRUCTURE
11	Tigaon	Third Class	12	168	10
152	Camaligan	Fifth Class	229	274	66
182	San Jose (CS)	Fourth Class	82	466	46
212	Baao	Third Class	139	542	26
318	Sagñay	Fourth Class	469	224	339
331	San Fernando (CS)	Fourth Class	307	430	161
377	Ocampo	Third Class	378	432	238
382	Pasacao	Third Class	196	534	290
544	Cabusao	Fifth Class	569	640	251
586	Balatan	Fourth Class	589	501	612
602	Bombon	Fifth Class	625	519	603
630	Gainza	Fifth Class	639	603	574
704	Bato (CS)	Third Class	594	669	712
711	Presentacion	Fourth Class	708	491	732

## MOST IMPROVED LGU RANKINGS: COMPONENT CITIES

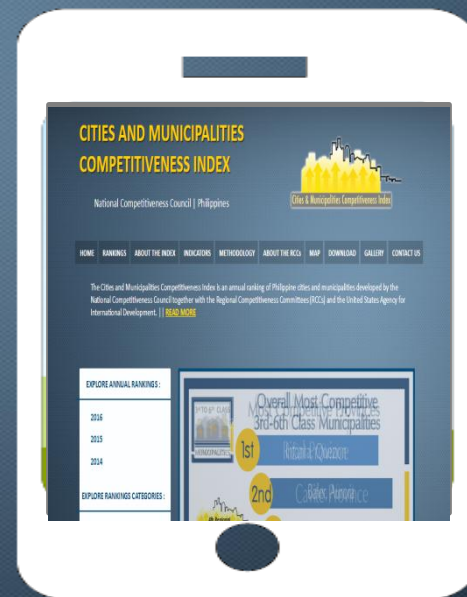
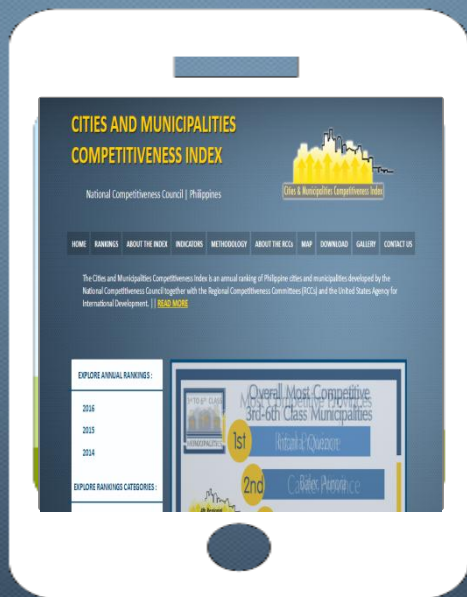
Rank	Local Government Unit	Overall Rank (2015)	Overall Rank (2016)	Change
45	Naga (CS)	1	1	No Change
56	Iriga	41	45	-4

# MOST IMPROVED LGU RANKINGS: 1ST TO 2ND CLASS MUNICIPALITIES

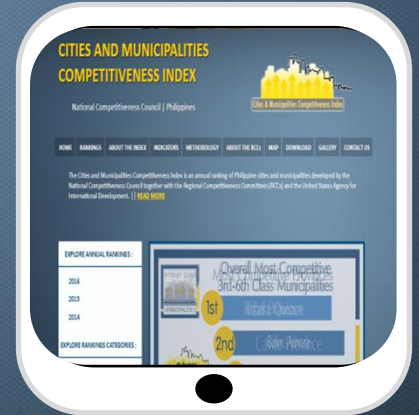
Rank	Local Government Unit	Overall Rank (2015)	Overall Rank (2016)	Change
22	Buhi	378	216	+162
35	Bula	236	98	+138
139	Libmanan	249	214	+35
158	Caramoan	446	423	+23
167	Calabanga	436	418	+18
186	Tinambac	448	441	+7
229	Sipocot	303	307	-4
308	Lagonoy	371	411	-40
312	Pili	29	70	-41
351	Goa	400	474	-74
401	Nabua	185	303	-118
404	Ragay	348	469	-121

## MOST IMPROVED LGU RANKINGS: 3RD TO 6TH CLASS MUNICIPALITIES

Rank	Local Government Unit	Overall Rank (2015)	Overall Rank (2016)	Change
58	Sagñay	438	318	+120
63	Ocampo	488	377	+111
184	Tigaon	10	11	-1
231	Camaligan	119	152	-33
251	San Jose (CS)	137	182	-45
287	Baao	144	212	-68
486	Pasacao	53	382	-329



www.competitive.org.ph



www.competitive.org.ph





NATIONAL  
COMPETITIVENESS  
COUNCIL | PHILIPPINES

# STEPS MOVING FORWARD



Cities & Municipalities Competitiveness Index

What to expect in #CMCI2017?

# More Indicators will be added

*Quality of Life*

*Security / Crime Rate*

*Environment Protection*

*Supply Chain and Logistics*

*Disaster Resiliency*

# Stricter rules for **data validation**

*More data validation requirements  
Evidence-based submissions*

# IT enabled data collection and validation

*A new e-system for data collection is currently being developed. LGUs may now submit data online.*

# Tougher Competition

*LGUs are getting better each year*

# More Competing LGUs

*More LGUs are expected to join*

*“you cannot manage  
what you don't measure”*

Peter Drucker







*“Measurement is the first step that leads to control and eventually to improvement.*

*If you can't measure it, you can't understand it, If you can't understand it, you can't control it. If you can't control it, therefore you can't improve it”*

H. James Harrington

*CONCLUSION*



MEASUREMENT=IMPROVEMENT

NCC Philippines



NATIONAL  
COMPETITIVENESS  
COUNCIL | PHILIPPINES

[www.competitive.org.ph/cmindex](http://www.competitive.org.ph/cmindex)